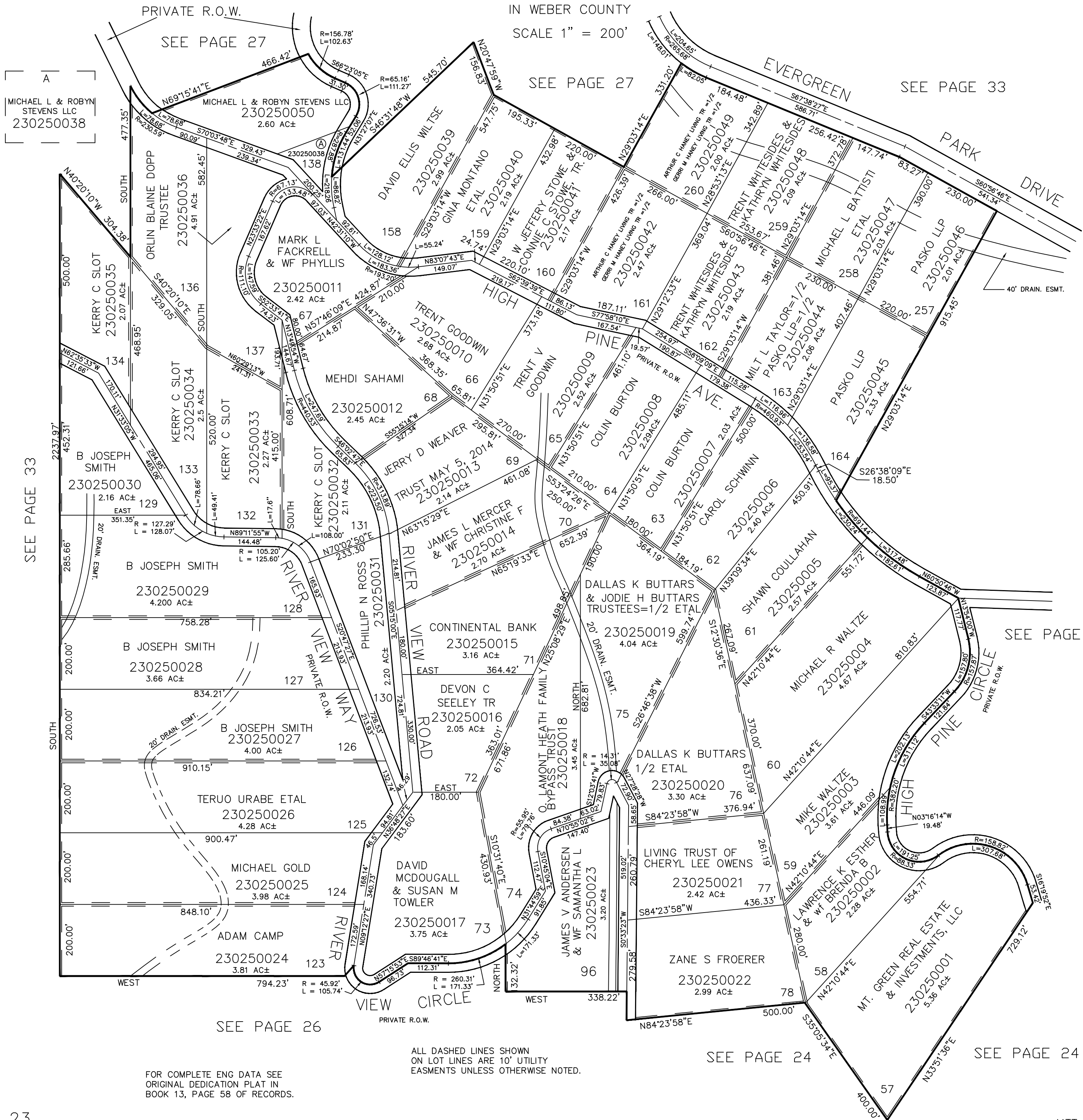


PART OF SEC. 31-32, T.7N., R.3E., S.L.B. & M.
EVERGREEN PARK SUBDIVISION NO. 1

TAXING UNIT: 58

IN WEBER COUNTY
SCALE 1" = 200'



MICHAEL L & ROBYN STEVENS LLC
230250038

SEE PAGE 33

SEE PAGE 26

ALL DASHED LINES SHOWN ON LOT LINES ARE 10' UTILITY EASEMENTS UNLESS OTHERWISE NOTED.

SEE PAGE 24

SEE PAGE 24

FOR COMPLETE ENG DATA SEE ORIGINAL DEDICATION PLAT IN BOOK 13, PAGE 58 OF RECORDS.